



DIE DAMHUIS BY HEYBERT

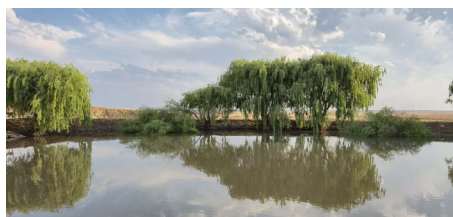
Die Damhuis is located just 8 minutes or 10 km outside Secunda, Mpumalanga, and offers both leisure and corporate amenities. The property features a private 5-bedroom villa that can accommodate up to 10 guests and a two-bedroom self-catering apartment with a private entrance on the farm. Guests can enjoy expansive open farmland and a relaxing, farm-style setting for a true home-away-from-home experience. We look forward to welcoming you to Die Damhuis by Heybert.

CHECK IN TIME: from 14:00 till 20:00 | **CHECK OUT TIME:** from 06:00 till 10:00



Die Damhuis Villa

Die Damhuis features five bedrooms, including four double beds and two single beds. It offers a fully equipped kitchen with a fridge and stove, one bathroom with shower facilities, and a spacious entertainment area with barbecue facilities. The venue also includes a stage, ideal for special occasions or unwinding after a long day.



We do not offer any food and beverage services on property. All room types are bookable on a room only basis. Smoking is prohibited in all guest rooms; however, designated smoking areas are available for guests who wish to smoke.



Two-bedroom Apartment

The two-bedroom apartment is located on the main farm and features a private entrance, making it perfect for groups or families. It includes two bedrooms with two double beds and one single bed, a shared private bathroom with shower facilities, and a kitchenette equipped with a stove and fridge. Additionally, the apartment offers barbecue facilities and a spacious open entertainment area.

INCLUDED IN OUR RATES

- Accommodation in our villa or two-bedroom self-catering apartment
- Daily cleaning facilities
- WIFI
- Secure parking
- Tea/Coffee making facilities
- Bathroom/Shower amenities

ADDITIONAL FEES

Lost key replacement fee at R1,000.00
 Smoking cleaning fee at R1,500.00
 Any damage/s to the property will be charged at the replacement value.
 The property and parking facilities will be occupied at your own risk

NOT INCLUDED IN OUR RATES

- Food and beverage not listed
- Laundry service (Available on property)
- Activities
- Pets allowed with prior arrangements
- Baby crib
- Extra beds

OR Tambo Airport: 122 Km or 1 hour 23 min from Die Damhuis
Lanseria Airport: 170 Km or 1 hour 53 from Die Damhuis
Sasol / Secunda: 7 Km or 10 min drive from Die Damhuis

NEARBY ACTIVITIES

- Sasol (7 Km)
- Golf course (10 Km)
- Spar Secunda (7 Km)
- Secunda Mall and Waterfront (10 Km)



THE HEYBERT
 COLLECTION

Directions from JHB to Die Damhuis

- Get on Francois Oberholzer Fwy/M2 in Wemmer from Miriam Makeba St and Village Rd.
- 5 min (1.6 km). Follow N17 to R546 in Mpumalanga. Take exit 225 from N17
- 1 hr 13 min (112 km). Turn right onto R546 23 min (29.4 km) Die Damhuis, Secunda